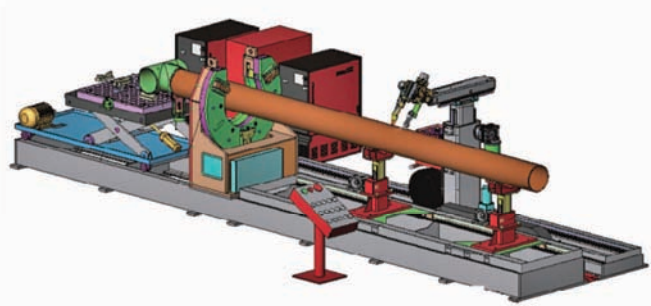


# PH-O SERIES

PIPE WELDING HEADSTOCK (OPEN)



PH-O-14

## FEATURES & TECHNICAL SPECIFICATIONS

- Unique open design convenient for large production areas
- Motorized three-jaw chuck positioning system to automatically center tube or pipe
- Anti-spatter headstock design
- Commonly used with MIG/MAG welding
- Can be used with MIG or TIG root welding, may also be used with PAW, SAW and other welding processes
- Designed for easy loading of large components
- Suitable for shipbuilding, chemical, nuclear plants and other prefab industries

### PH-O Series

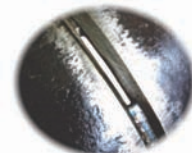
	PH-O-4	PH-O-9	PH-O-14	PH-O-30
Diameter Range mm (inches)	19-114mm (.75"-4.5")	34-230mm (1.34"-9.05")	114-370mm (4.5"-14.6")	219-760mm (8.6"-30")
Loading Capacity (kg)	200	550	1300	15000
Loading Capacity (lbs)	440lbs	250lbs	2860lbs	6820lbs
Max. Torque (N·m)	125	1037	2500	30000
Max. Torque (lbf·ft)	92	765	1844	22127
Power (kw)	0.07	0.4	1.3	4
Power	0.09	0.54	1.74	5.36
Center Height (mm)	375	570	670	1405
Center Height (inches)	14.75"	22.5"	26.5"	55.5"
Dimension (mm)	300 x 252 x 475	520 x 390 x 795	924 x 460 x 1024	115 x 1285 x 2090
Dimension (inches)	12" x 10" x 19"	20.5" x 15.5" x 31.5"	36.5" x 18" x 40.5"	4.5" x 51" x 83"



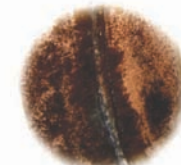
MIG ROOT PASS WELDING TECHNIQUE



REAL-TIME MONITORING



FRONT SEAM



BACK SEAM